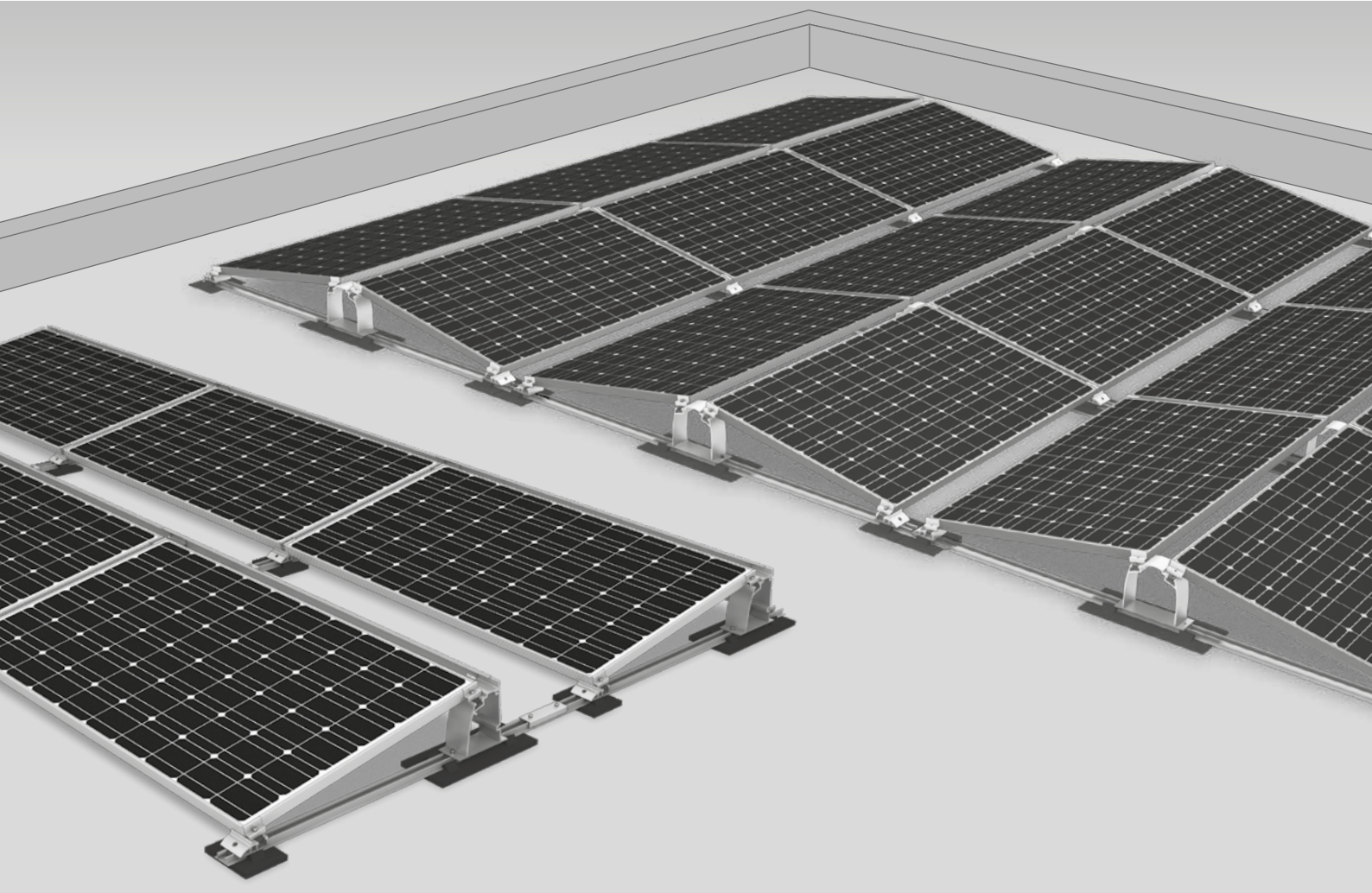




Dome Classic System



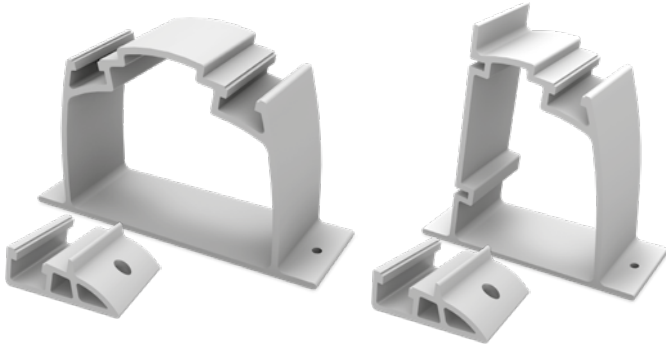
/ A system for statically difficult roofs and special applications

/ Can also be mounted on trapezoidal sheet metal roofs

/ Quick and easy handling



Components



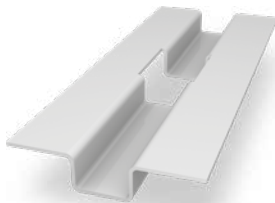
Dome S1000 and Dome SD

Module support elements for one-sided and two-sided elevations



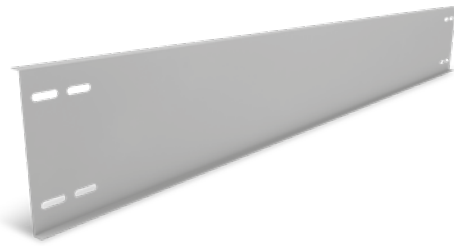
SpeedRail with building protection mats

Laminated or unlaminated building protection mats, depending on roof covering material



Ballast Management

SpeedPorter: For quick and easy ballasting



Windbreaker for S-Dome elevation

- / Wind deflection on the rear of Dome systems
- / Various lengths available

Technical data

	D-Dome Classic	S-Dome Classic
Scope of application	Flat roofs $\leq 5^\circ$ with single ply membrane or bituminous roof covering, also on concrete, gravelled or green roofs; also trapezoidal sheet metal roofs with continuous mounting rails	
Fastening type/roof fixture	Ballasted; no roof penetration for inclination $\leq 3^\circ$	
Requirements	<ul style="list-style-type: none"> • Permissible module dimensions [L × W × H]: 1386 - 2300 × 950 - 1100 × 30 - 50 mm • Minimum system size: 2 supports (4 modules) • Module approved for corner clamping [see k2-systems.com/en/approved-modules] 	<ul style="list-style-type: none"> • Permissible module dimensions [L × W × H]: 1386 - 2067 × 950 - 1100 × 30 - 50 mm • Minimum system size: 2 modules
Technical specifications	<ul style="list-style-type: none"> • Thermal separation after max. 11 m [trapezoidal sheet metal 8.7 m] • Minimum clearance to roof edge 600 mm 	
Inclination angle	10°	
Material	<ul style="list-style-type: none"> • Mounting rails, D-/S-Dome, Dome SD, Windbreaker, module clamps, rail connectors: Aluminium EN AW-6063 T66 • Building protection mat with or without aluminium lining [PUR-bound rubber granules] • Windbreaker: Steel with Magnelis coating • Small parts: Stainless steel [1.4301] A2-70 	

